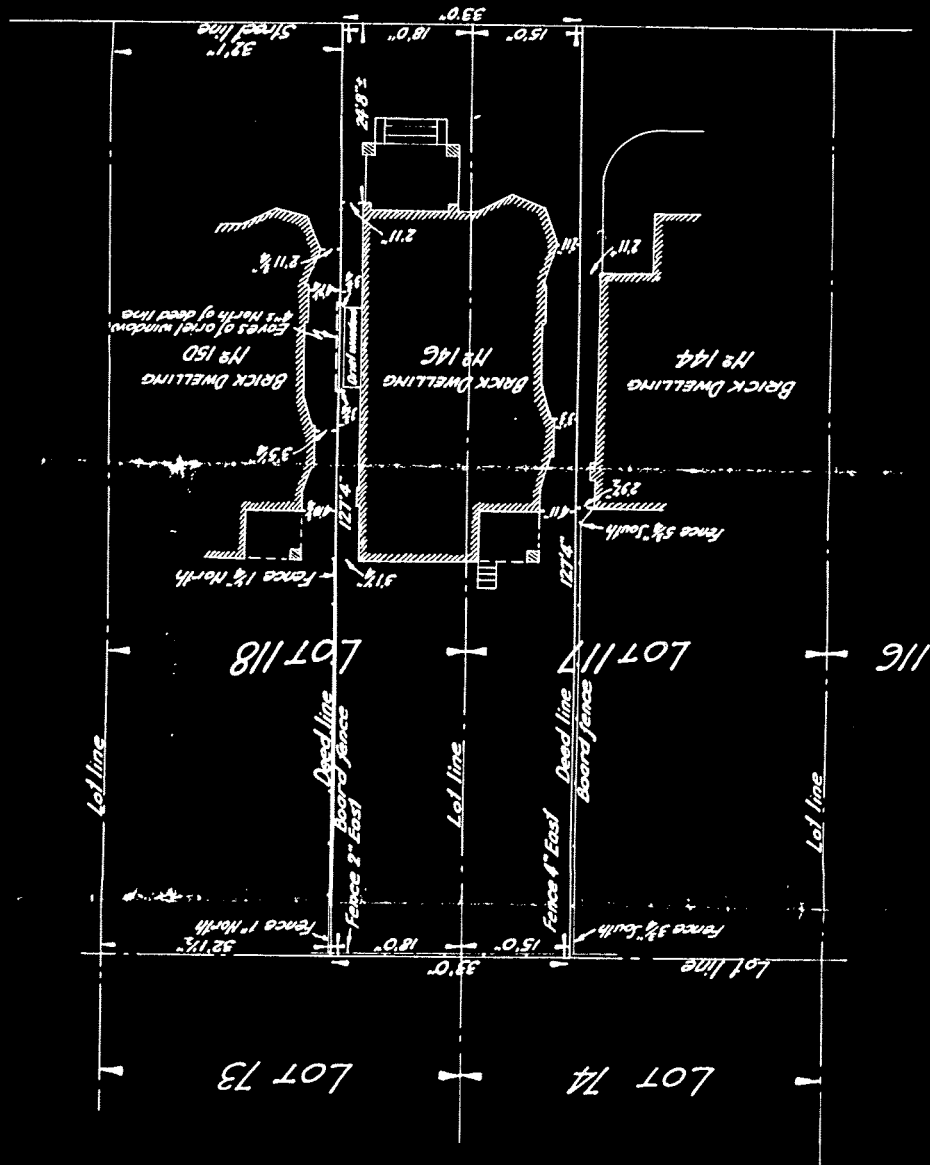
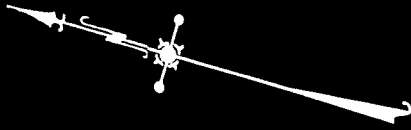


PLAN SHOWING  
 PARTS OF LOTS 117 & 118 REG<sup>d</sup> PLAN 698  
 TORONTO  
 Scale 1/8" = 10 ft.



WALMER ROAD

Messrs. Mosson, Foulis, Davidson & Gale, Barr. Etc,  
 372 Bay Street,  
 Toronto, Ont.

Speight, van Neshrand, Ward & Anderson  
 372 Bay St,  
 Ontario Land Surveyors  
 Toronto, Ont.  
 Per: *[Signature]*  
 Feb. 11th 1917  
 Ontario Land Surveyor