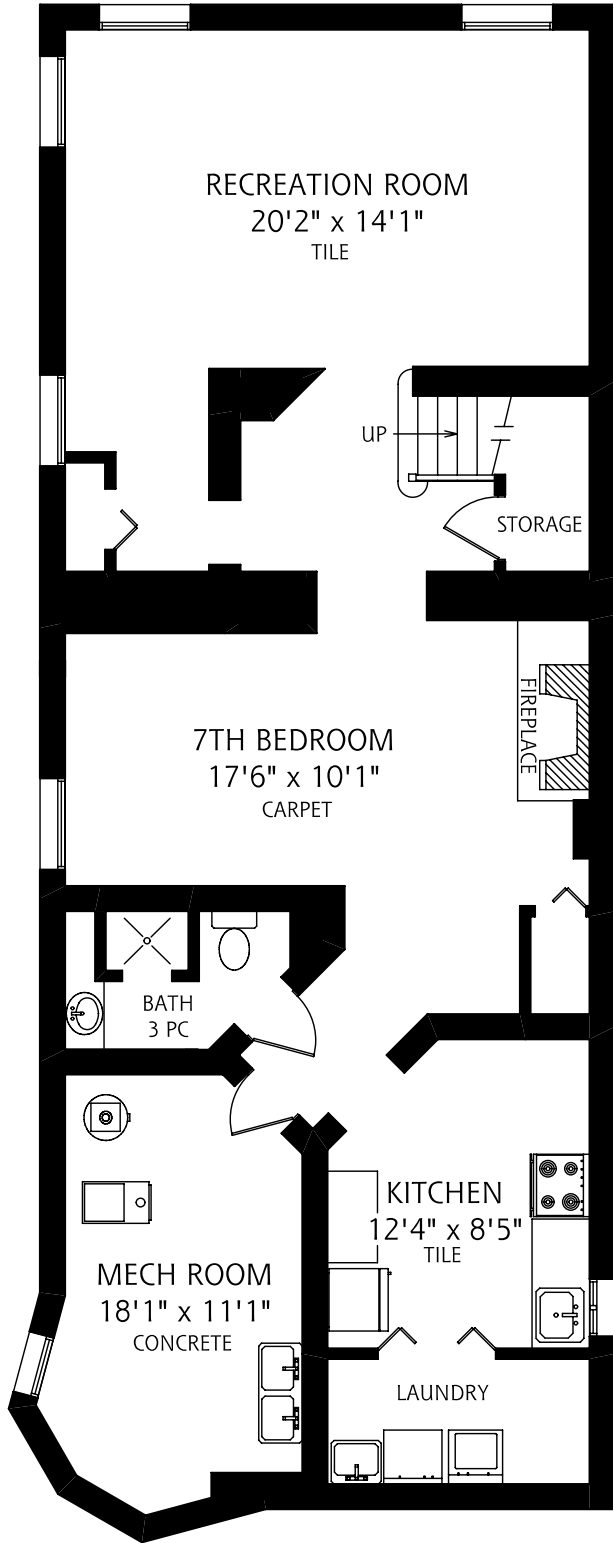
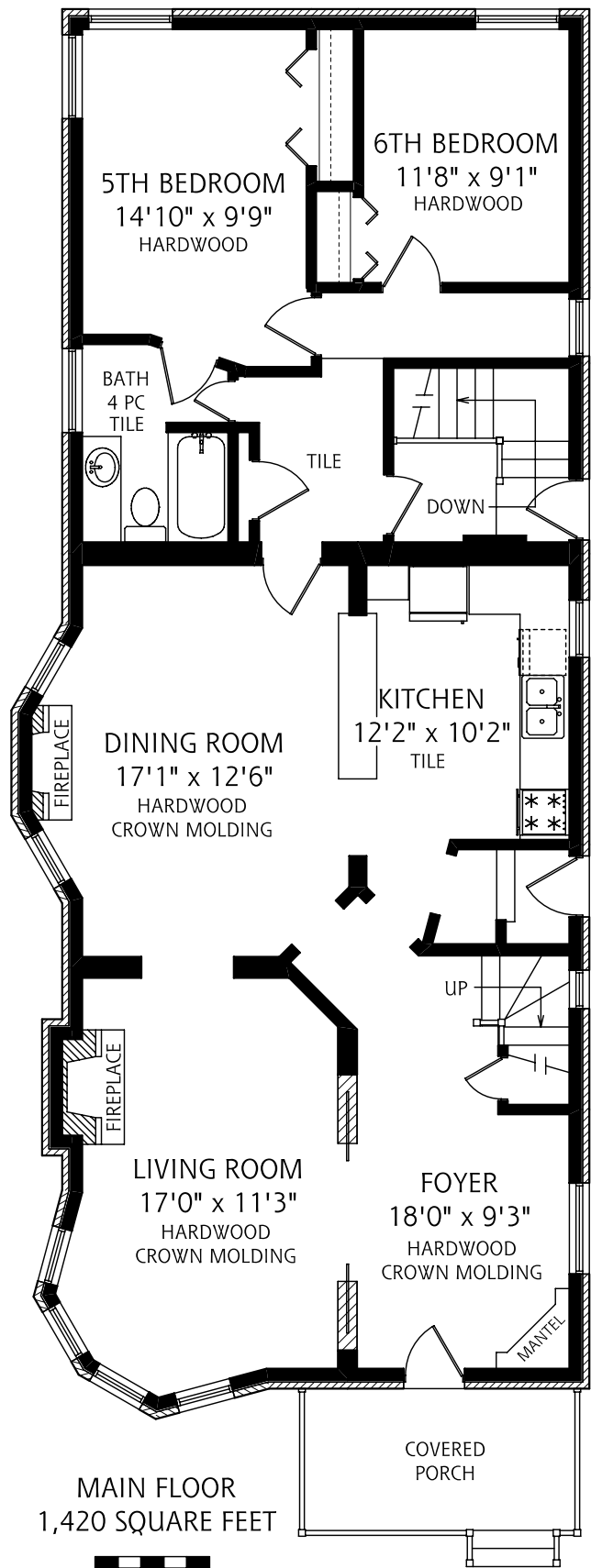


246 RUSHOLME ROAD



LOWER LEVEL
1,395 SQUARE FEET



MAIN FLOOR
1,420 SQUARE FEET



ALL MEASUREMENTS SHOULD BE CONSIDERED APPROXIMATE

OPHIRA SUTTON
SALES REPRESENTATIVE



SUTTON GROUP - ASSOCIATES REALTY INC., BROKERAGE
(416) 966 - 0300



REAL FLOOR PLANS
www.realfloorplans.com

MAY 19, 2009 - COLIN THOMSON - 416-800-7526