

N 73° 33' 20" E



No. 35
TWO-STORY
BRICK DWELLING

No. 33
TWO-STORY
BRICK DWG.
WITH ATTIC

No. 31
TWO-STORY
BRICK DWEL
WITH ATTIC

Survey of 33 Bartonville Ave
which includes 31 Bartonville Ave.

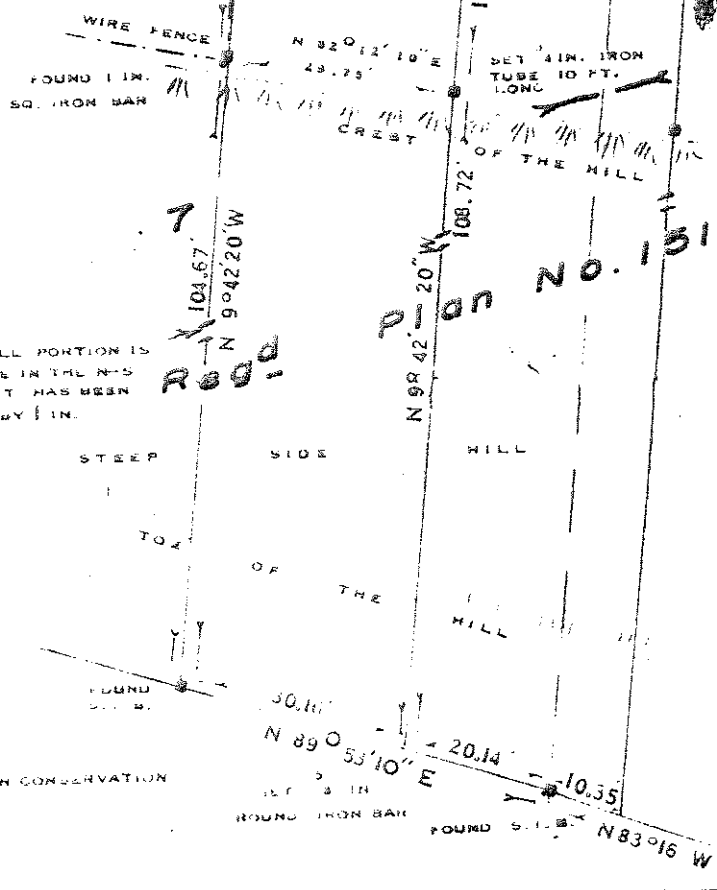
Part of Lot 7, Reg'd Plan
No. 1510

CITY OF YORK IN THE
MUNICIPALITY OF METROPOLITAN TORONTO

SCALE 1 INCH = 20 FEET

R. Bryce Code

R. BRYCE CODE, P. ENG.,
ONTARIO LAND SURVEYOR
1 WELBROOKE PLACE,
ISLINGTON, TEL. 6225590
DECEMBER 17, 1983



NOTE
THE SIDE HILL PORTION IS
NOT TO SCALE IN THE N-S
DIRECTION IT HAS BEEN
SHORTENED BY 1 IN.

LANDS OF THE
METROPOLITAN TORONTO AND REGION CONSERVATION
AUTHORITY

FOUND 3 IN. ROUND IRON BAR
FOUND 5.1 IN. ROUND IRON BAR
N 83° 16' W