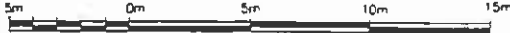


SURVEYOR'S REAL PROPERTY REPORT
PART 1 - PLAN OF
PART OF LOT 200
REGISTERED PLAN M-6
CITY OF TORONTO

SCALE: 1 = 200



© COPYRIGHT CHRIS BERESNIEWICZ LTD., O.L.S., 2002

METRIC

DISTANCES SHOWN HEREON ARE IN METRES AND CAN BE CONVERTED TO FEET BY DIVIDING BY 0.3048

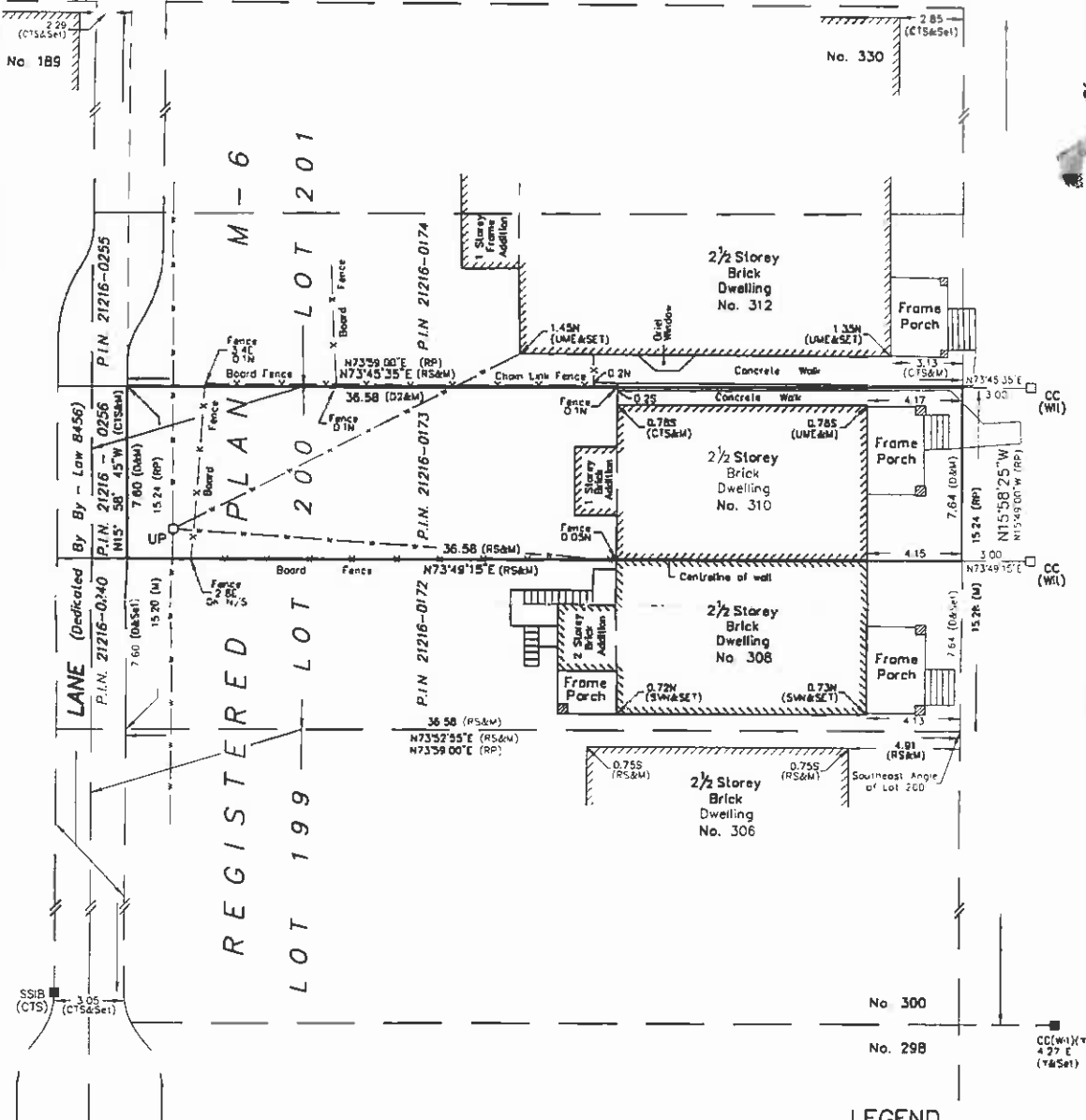
ASSOCIATION OF ONTARIO
 LAND SURVEYORS
 PLAN SUBMISSION FORM
 1417462



THIS PLAN IS NOT VALID UNLESS IT IS AN EMBOSSED ORIGINAL COPY ISSUED BY THE SURVEYOR in accordance with Regulation 1026, Section 29(3).



DUPONT STREET



ST. GEORGE STREET
 (BY REGISTERED PLAN M-6)
 P.I.N. 21216 - 0221

LEGEND

- DENOTES SURVEY MONUMENT SET
- SURVEY MONUMENT FOUND
- SSIB SHORT STANDARD IRON BAR
- IB IRON BAR
- CC CUT CROSS
- WL WITNESS
- RP REGISTERED PLAN M-6
- CTS CITY OF TORONTO SURVEYS
- UME UNWIN, MURPHY AND ESTEN, O.L.S.
- RS ROWAN-STANCIU LTD., O.L.S.
- Y YOUNG & YOUNG, O.L.S.
- D PARCEL 200-1, SECTION M6
- O2 PARCEL 201-2, SECTION M6
- M MEASURED
- UP UTILITY POLE
- w- OVERHEAD UTILITY WIRES
- N.S.E.W NORTH, SOUTH, EAST, WEST

THIS PLAN WAS PREPARED FOR MR P JAIN
 PLEASE SEE PART 2 - A LETTER DATED OCTOBER 28, 2002

BEARING NOTE

BEARINGS ARE ASTROMOMIC AND ARE REFERRED TO THE WEST LIMIT OF ST. GEORGE STREET, HAVING A BEARING OF N15°58'25"W AS SHOWN ON C.T.S. NOTES

SURVEYOR'S CERTIFICATE

I HEREBY CERTIFY THAT:

1. THIS SURVEY AND PLAN ARE CORRECT AND IN ACCORDANCE WITH THE SURVEYS ACT, THE SURVEYORS ACT, THE LAND TITLES ACT AND THE REGULATIONS MADE UNDER THEM
2. THIS SURVEY WAS COMPLETED ON THE 28th DAY OF OCTOBER, 2002.

OCTOBER 28, 2002
 DATE

Chris Beresiewicz
 CHRIS BERESNIEWICZ
 ONTARIO LAND SURVEYOR

Chris Beresiewicz Ltd.
 ONTARIO LAND SURVEYOR

4214 DUNDAS STREET WEST, SUITE 210, TORONTO ON M8X 1Y6
 PH: (416)231-1174 FAX: (416)231-4119
 bchris@pathcom.com

DRAWN: J.K. CHECKED: C.B. PROJECT No. 02-123