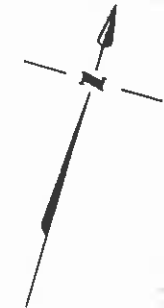
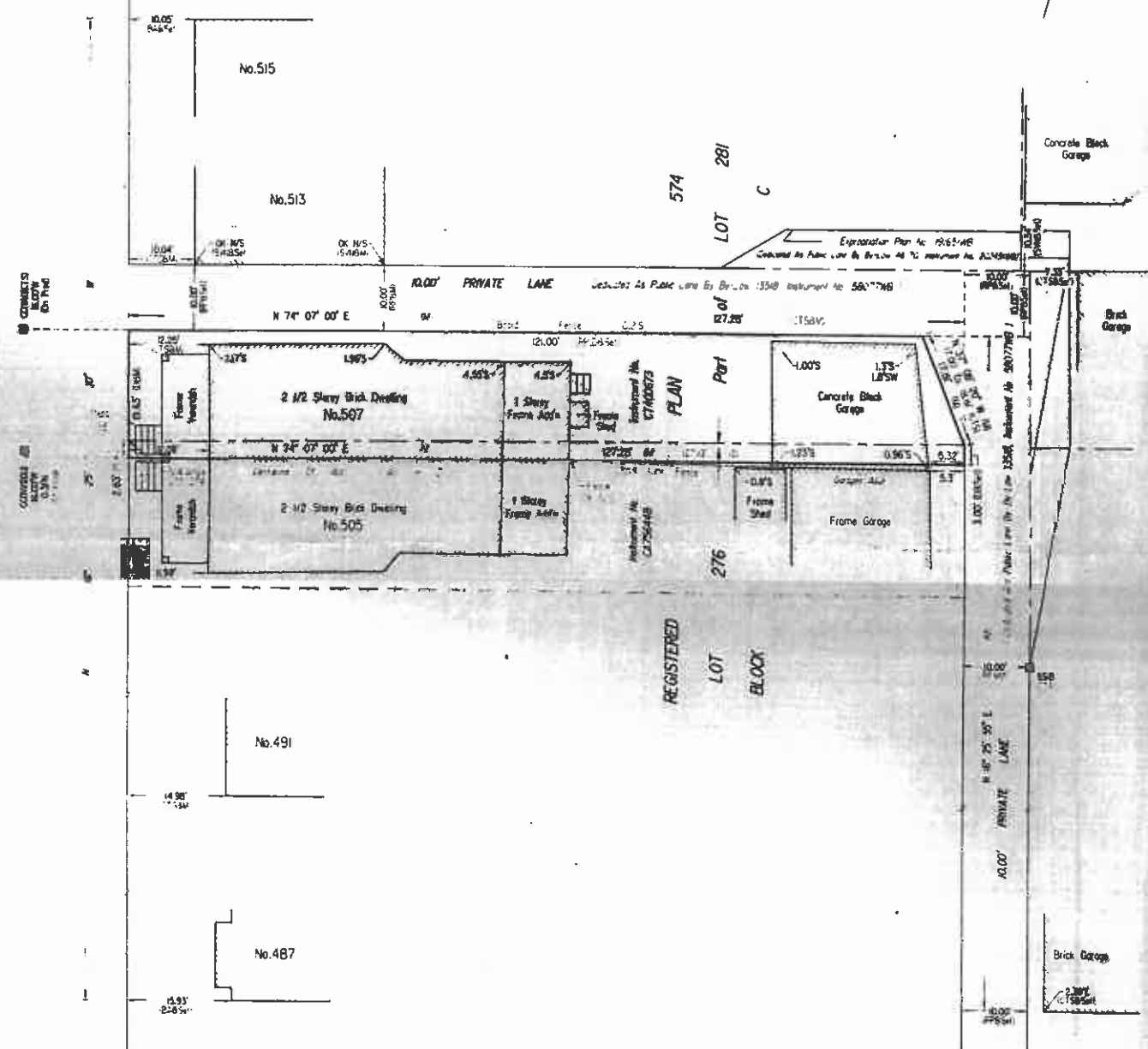


SURVEYOR'S REAL PROPERTY REPORT - PART I
 PLAN OF
 Part of LOTS 276 and 281, BLOCK C
 REGISTERED PLAN 574
 CITY OF TORONTO

SCALE: 1 inch = 45 feet
 YOUNG AND YOUNG SURVEYING INC.
 ONTARIO LAND SURVEYORS
 © COPYRIGHT 2002



EUCLID AVENUE
 (By By-Law 1526) (Formerly LAMBLEY STREET By Registered Plan 93)
 (By By-Law 1526) (Formerly LAMBLEY STREET By Registered Plan 93)



IMPERIAL
 DISTANCES SHOWN ON THIS PLAN ARE IN FEET AND CAN
 BE CONVERTED TO METRES BY MULTIPLYING BY 0.3048.

SURVEYOR'S CERTIFICATE
 I CERTIFY THAT:
 1. THIS SURVEY AND PLAN ARE CORRECT AND IN ACCORDANCE WITH
 THE SURVEYS ACT, THE SURVEYORS ACT, THE REGISTRY ACT AND
 THE REGULATIONS MADE UNDER THEM.
 2. THIS SURVEY WAS COMPLETED ON THE 3rd DAY OF JULY, 2002

C. Be...
 CHRIS BRESHENWICZ
 ONTARIO LAND SURVEYOR

ASSOCIATION OF ONTARIO
 LAND SURVEYORS
 PLAN SUBMISSION FORM
 1421084

THIS PLAN IS NOT VALID
 UNLESS IT IS AN EMBOSSED
 ORIGINAL COPY
 ISSUED BY THE SURVEYOR
 in accordance with
 Regulation 1026, Section 29(3)

LEGEND

□	DENOTES	SURVEY MONUMENT SET
■	---	SURVEY MONUMENT FOUND
RP	---	REGISTERED PLAN 574
N.S.E.W	---	NORTHSOUTH-EAST, WEST
M	---	MEASURED
CC	---	CUT CROSS
SB	---	STANDARD IRON BAR
SSB	---	SHORT STANDARD IRON BAR
IB	---	IRON BAR
WT	---	WITNESS
SW	---	SPEIGHT & VAN NOSTRAND, O.L.S
CTS	---	CITY OF TORONTO SURVEYS
D	---	INSTRUMENT NO. CT400673
PROD	---	PRODUCTION
BA	---	PLAN BA-1782
OU	---	ORIGIN UNKNOWN

THIS PLAN WAS PREPARED FOR MS. ANGELA RIZZO.
 PLEASE SEE PART 2 - A LETTER DATED AUGUST 8, 2002.

BEARING NOTE
 BEARINGS ARE ASTROLOGICAL AND ARE REFERRED TO THE EAST
 LIMIT OF EUCLID AVENUE, HAVING A BEARING OF N62°51'0" W
 ACCORDING TO PLAN BA-1782.

Young & Young Surveying Inc.
 PROFESSIONAL LAND SURVEYORS

TORONTO 305 THE WEST HILL, SUITE 400 TORONTO ONTARIO M5R 2E7 PHONE (416) 621-2676 FAX 621-3320	BOLTON 2 HOLLAND DRING LANE #2 BOLTON ONTARIO L7R 4P7 PHONE (905) 709-4000 FAX 709-4001
---	--

DRAWN BY P.E.M. PROJECT 02-T5925

AUGUST 8, 2002
 DATE