

509 Brunswick Ave.
\$2,990/month



Main Floor **9'4" high ceilings**

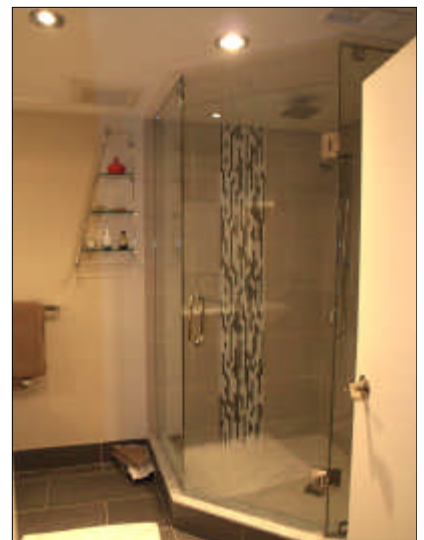
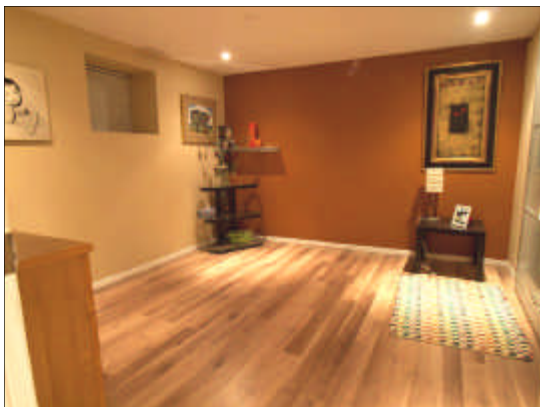
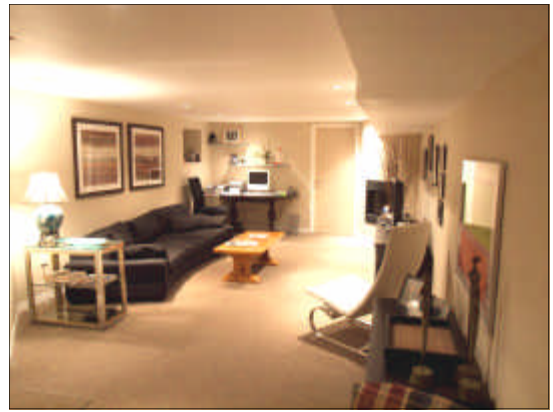
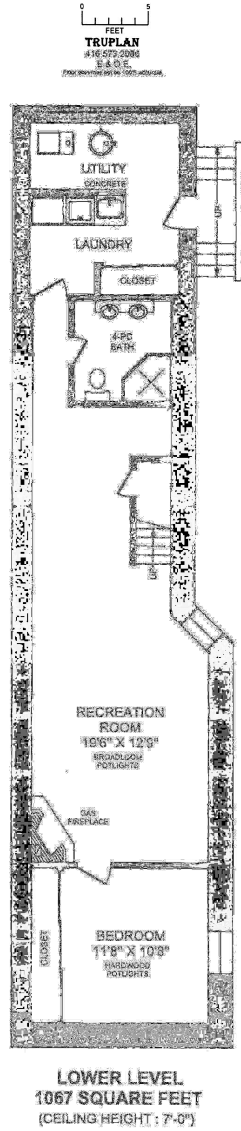
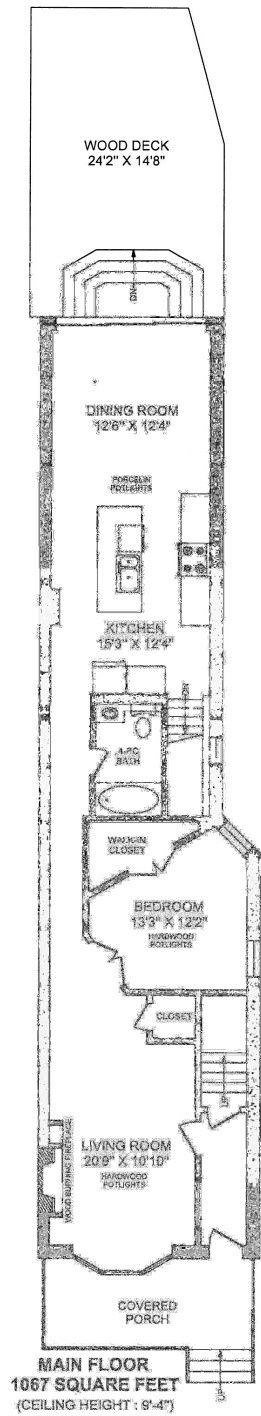
Living Room	20'9" x 10'10"	✎ Bay window, hardwood floors, pot lights, wood burning fireplace.
Dining Room	12'6" x 12'4"	✎ Sliding glass doors to landscaped deck, pot lights.
Kitchen	15'3" x 12'4"	✎ Renovated, island kitchen, porcelain pot lights. Appliances ✎ Fridge, stove, dishwasher.
Bedroom	13'3" x 12'2"	✎ Walk-in closet, hardwood floors, pot lights.
Bathroom	1-4pc.	

Lower Level

Recreation Room	19'6" x 12'9"	✎ Gas fireplace, broadloom , pot lights.
Bedroom	11'8" x 10'8"	✎ Wall to wall closet with sliding doors, hardwood floors, pot lights.
Bathroom	1-4pc.	✎ Separate shower stall with glass enclosure, double sink.
Laundry		✎ Walkout to side entrance. ✎ Washer, dryer.



509 BRUNSWICK AVENUE



FEATURING: Annex bi-level gorgeous reno. 2 bedroom unit. Top of the line, very modern island kitchen and walls of sliding doors to landscaped deck. Modern white marble fireplace with built-in surrounds.

Separate forced air gas furnace with central air conditioning. Tenants to pay own utilities.

LOCATION: Prime Annex location. Quiet street. Walk to Popular park and subway.

PARKING: Includes one car parking.

For Further information, please contact

Ophira Sutton

Sales Representative

Sutton Group-Associates Realty Inc., Brokerage

416-966-0300

ophirasutton@rogers.com

www.ophirasutton.com

This feature sheet is for marketing purposes only. All information is deemed reliable but not a warranty or representation as to its accuracy. It is subject to error, omissions, changes, prior to sale or other conditions. Seller pr agents shall not be held liable, Buyer responsible to verify all information. All above measurements are approximate and are given in meters except where stated. The information included in this feature sheet was collected from various sources.