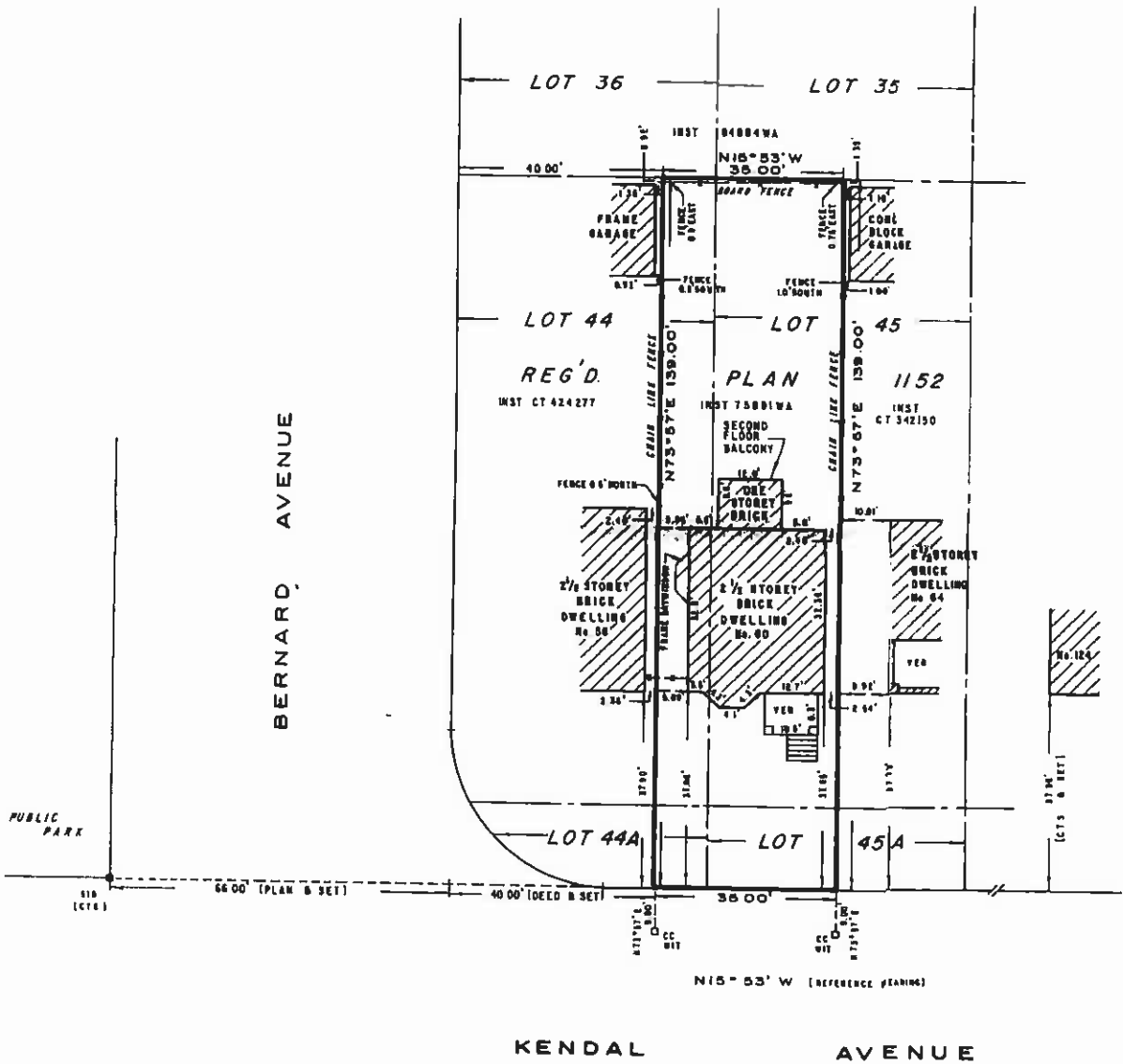
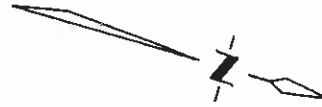


**BUILDING LOCATION SURVEY OF
PART OF LOTS 44, 44A, 45 AND 45A
REGISTERED PLAN 1152**

**CITY OF TORONTO
MUNICIPALITY OF METROPOLITAN TORONTO**

SCALE : 1" = 20'

VALDEK RAIEND LTD.
ONTARIO LAND SURVEYOR
1984



NOTES
 ● DENOTES SURVEY MONUMENT FOUND
 ○ SURVEY MONUMENT SET
 ○/BB STANDARD IRON BAR
 IB IRON BAR
 CC CUT CROSS
 WIT WITNESS MONUMENT

BEARINGS ARE ASTRONOMIC AND ARE REFERRED TO THE WEST LIMIT OF KENDAL AVENUE AS SHOWN ON REG'D PLAN 1152 HAVING A BEARING OF N 15° 53' W

SURVEYOR'S CERTIFICATE
 I CERTIFY THAT
 THE FIELD SURVEY REPRESENTED ON THIS PLAN WAS
 COMPLETED ON THE 4th DAY OF JANUARY, 1984

JANUARY 5, 1984
 DATE

V. Raiend
 V. RAIEND
 ONTARIO LAND SURVEYOR

VALDEK RAIEND LTD.
 ONTARIO LAND SURVEYOR
 176 PINENEY BOULEVARD
 WILLOWDALE, ONTARIO
 M2H 1A8

REFERENCE No S-120-19