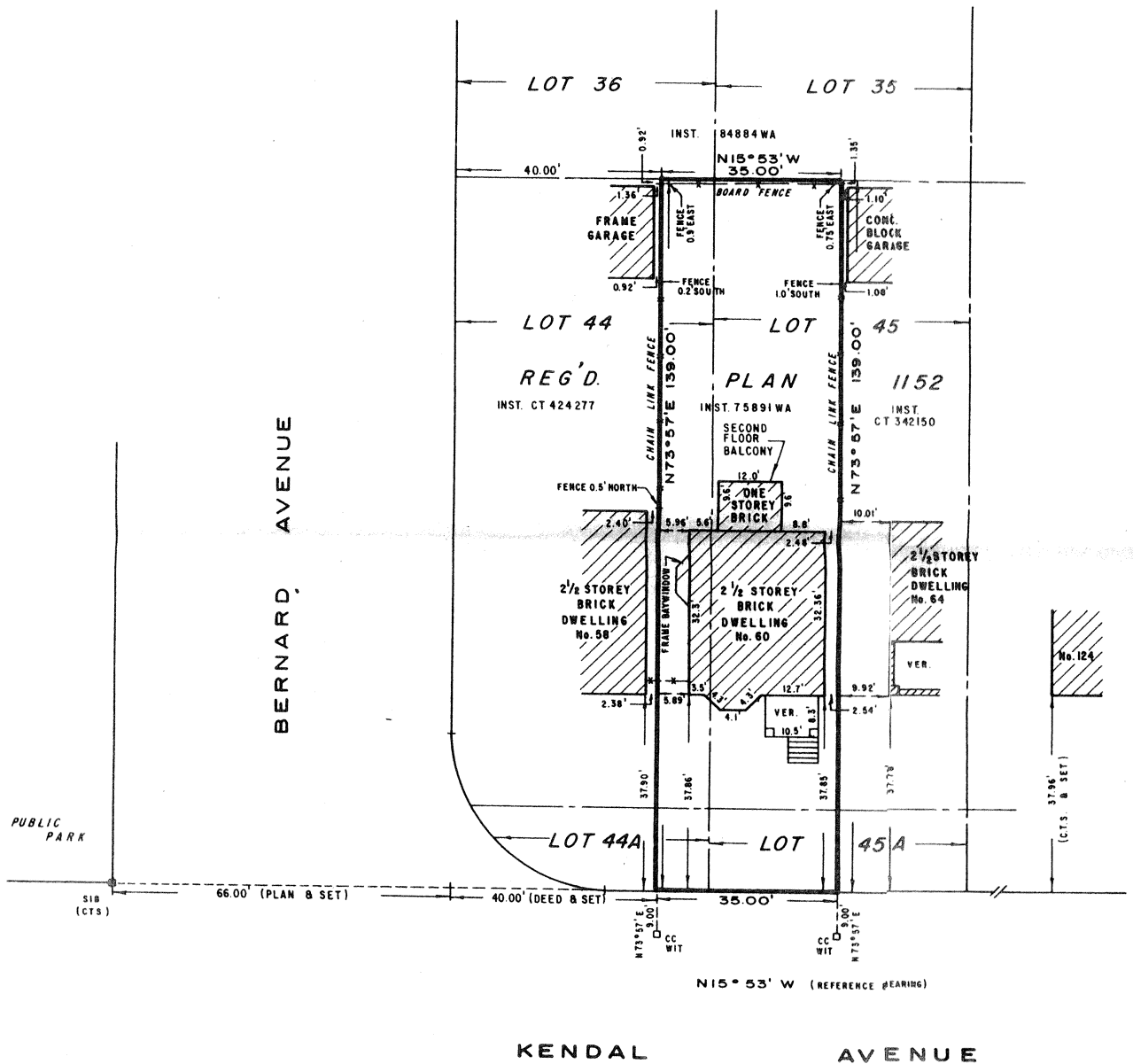


BUILDING LOCATION SURVEY OF  
PART OF LOTS 44, 44A, 45 AND 45A  
REGISTERED PLAN 1152

**CITY OF TORONTO**  
MUNICIPALITY OF METROPOLITAN TORONTO

SCALE : 1" = 20'

VALDEK RAIEND LTD.  
ONTARIO LAND SURVEYOR  
1984



**NOTES**

- DENOTES SURVEY MONUMENT FOUND
- " SURVEY MONUMENT SET
- SIB " STANDARD IRON BAR
- IB " IRON BAR
- CC " CUT CROSS
- WIT " WITNESS MONUMENT

BEARINGS ARE ASTRONOMIC AND ARE REFERRED TO THE WEST LIMIT OF KENDAL AVENUE AS SHOWN ON REG'D. PLAN 1152 HAVING A BEARING OF N15°53' W

**SURVEYOR'S CERTIFICATE**

I CERTIFY THAT:  
THE FIELD SURVEY REPRESENTED ON THIS PLAN WAS  
COMPLETED ON THE 4th DAY OF JANUARY, 1984

JANUARY 6, 1984  
DATE

*V. Raiend*  
V. RAIEND  
ONTARIO LAND SURVEYOR

VALDEK RAIEND LTD.  
ONTARIO LAND SURVEYOR

176 PINEWAY BOULEVARD  
WILLOWDALE, ONTARIO  
M2H 1A8

REFERENCE No: S-120-19