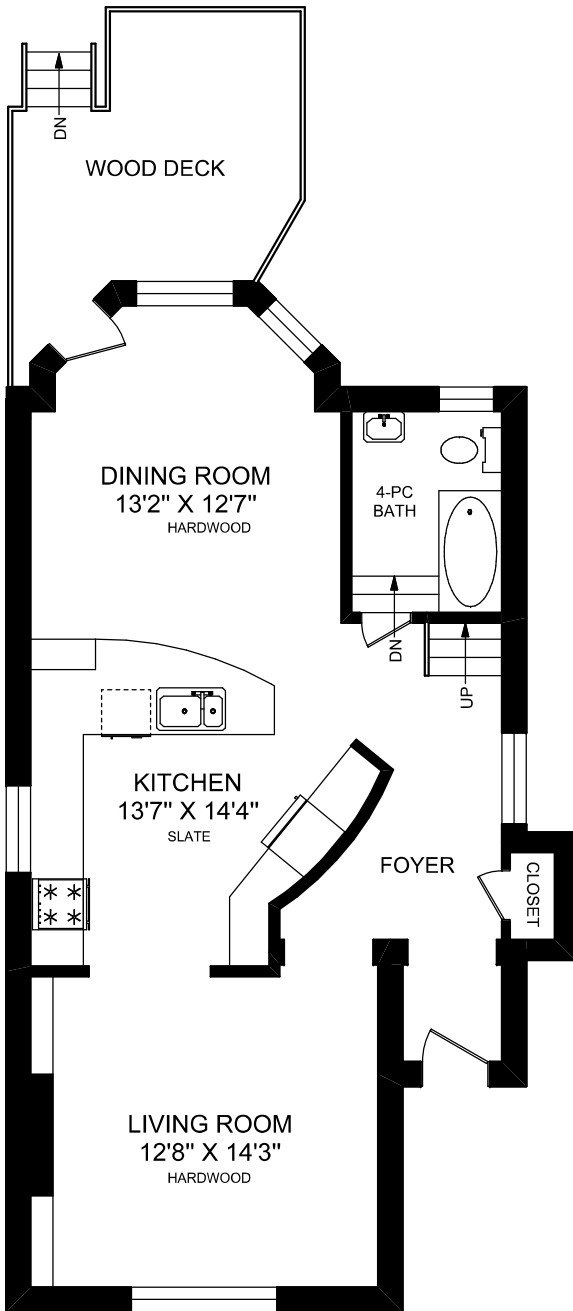


65 SHANNON STREET

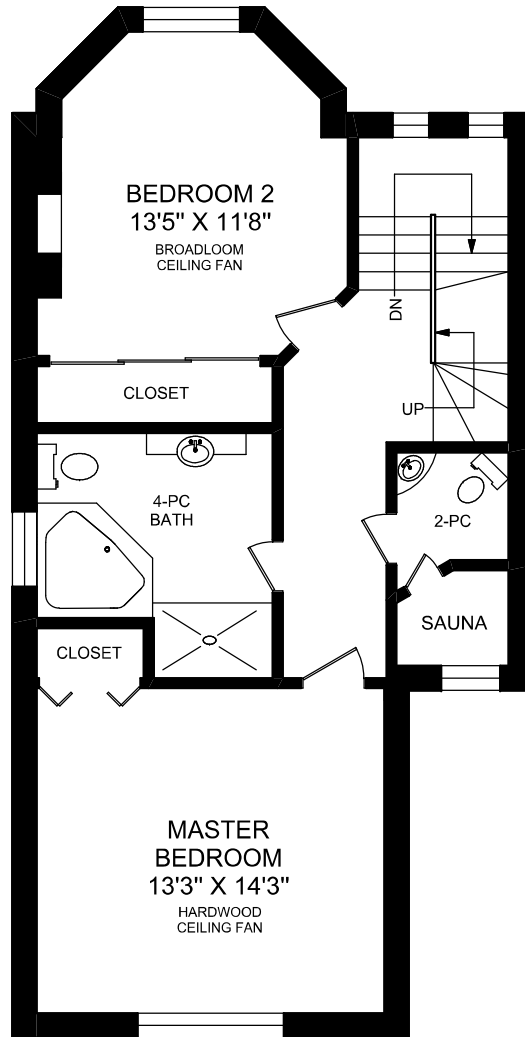


TRUPLAN
416 573 2096
E & O.E.

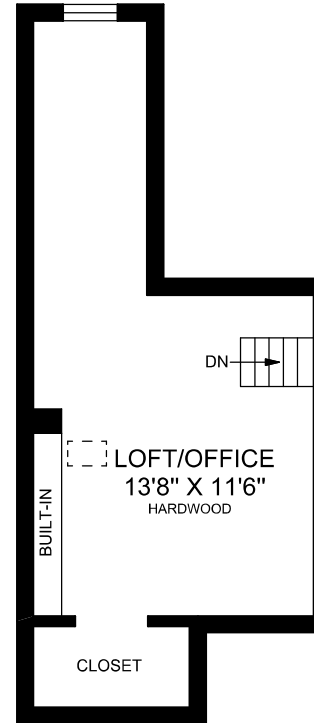
Floor plan may not be 100% accurate.



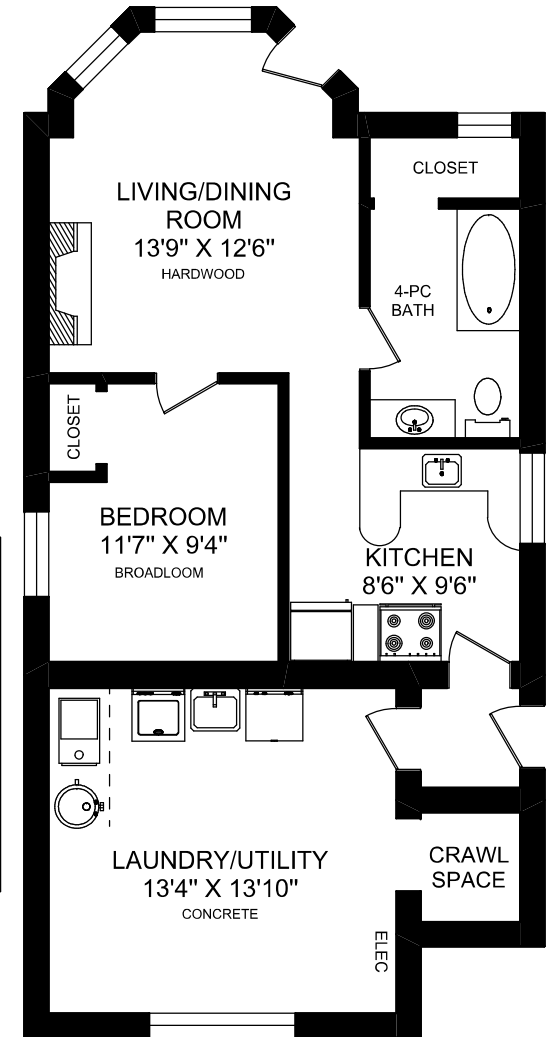
MAIN FLOOR
823 SQUARE FEET
(CEILING HEIGHT : 9'-3")



SECOND FLOOR
788 SQUARE FEET
(CEILING HEIGHT : 9'-0")



LOFT
(LOW CEILING)



LOWER LEVEL
806 SQUARE FEET
(CEILING HEIGHT : 8'-8")