

Penthouse at the 'Mosaic'

by

Ophira Sutton

Sales Representative



736 Spadina Ave PH01

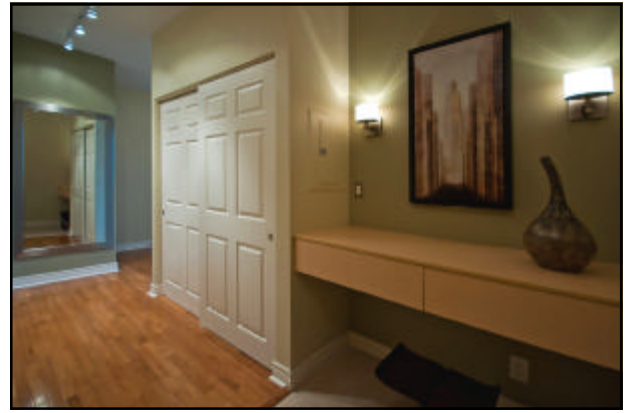
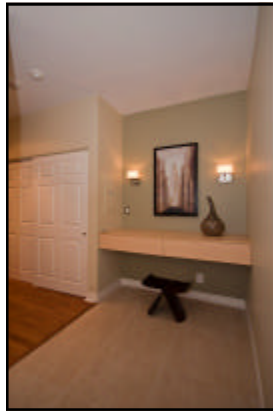
FEATURING: Breathtaking south east panoramic skyline view of downtown Toronto. Prime Annex location at Bloor & Spadina. 1185 Sq. Ft. plus 400 square foot terrace & balcony space. 2 bedrooms, 2 baths, locker. Floor to ceiling glass windows, hardwood floors, 9' ceilings.

PARKING: 2 underground parking spots.

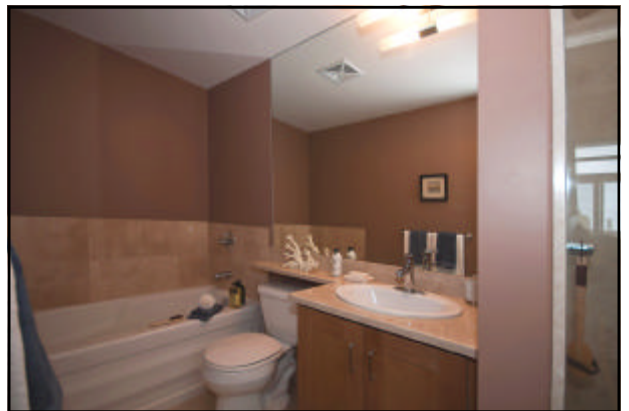
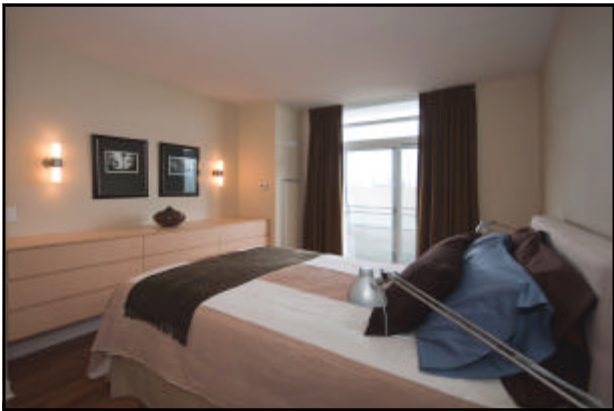
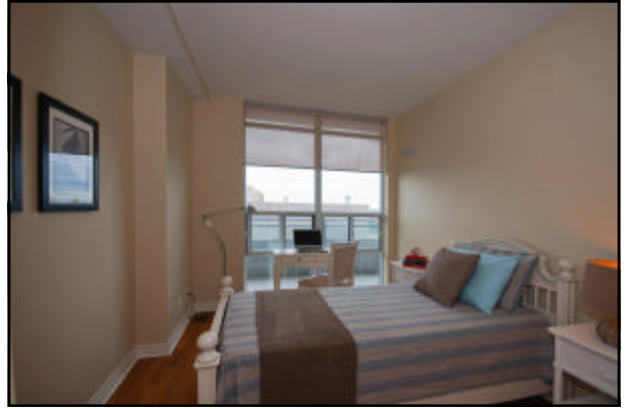
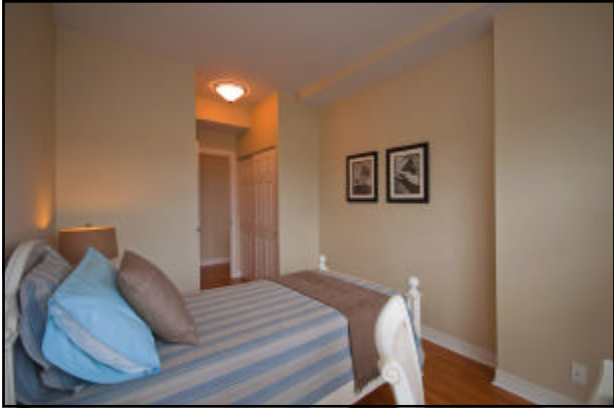
OFFERED AT: \$ 698,000

**Sun filled space with floor to ceiling windows,
9' ceilings and hardwood floors**

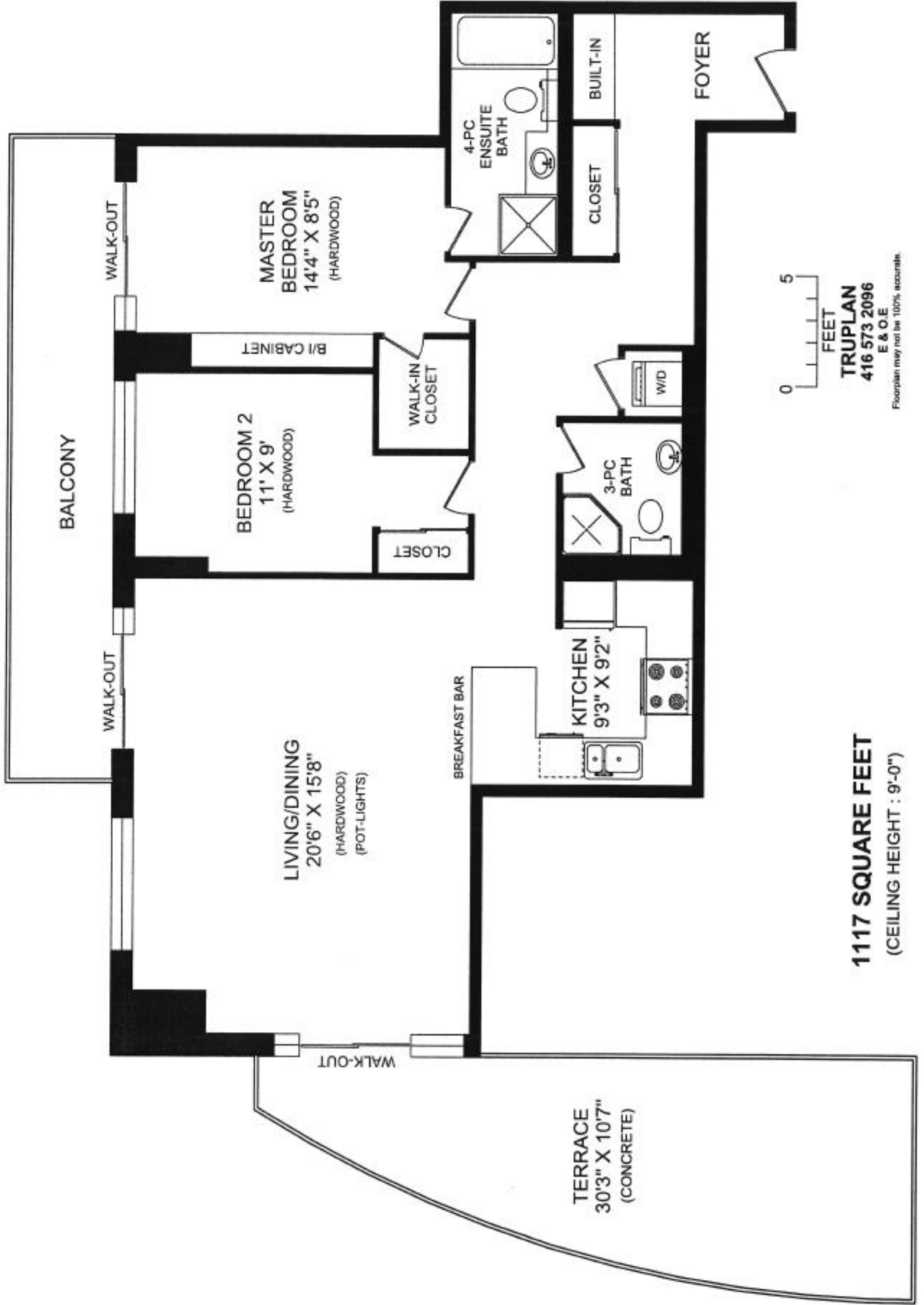
<i>Foyer</i>		↻ Built-in desk, double closet, porcelain and hardwood floors.
<i>Laundry</i>		↻ Stacked washer and dryer.
<i>Bathroom</i>	1-3pc	↻ Pedestal sink, enclosed shower, ceramic floors.
<i>Kitchen</i>	2.82 x 2.79m	↻ Maple cabinets. Granite counters with undermount sink, breakfast bar overlooking living/dining room, ceramic floors.
	<i>Stainless Steel Appliances</i>	↻ Fridge, stove, dishwasher, built-in microwave and range hood.
<i>Living/Dining Room</i>	6.25 x 4.78m	↻ Walk out to 30'3" x 10'7" foot terrace and balcony, large corner window, hardwood floors, pot lights.
<i>Bedroom</i>	3.35 x 2.74m	↻ Double closet, large window, hardwood floors.
<i>Master Bedroom</i>	4.37 x 2.57m	↻ Ensuite bathroom, built-in cabinet, walk-in closet, walk-out to balcony, hardwood floors.
	<i>4pc Ensuite</i>	↻ Separate enclosed shower, ceramic floors.







736 SPADINA AVENUE, SUITE PH01

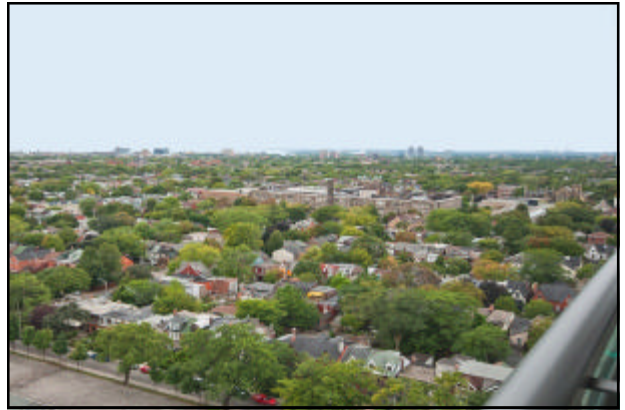


0 5
FEET

TRUPLAN
416 573 2096
E & O E

Floorplan may not be 100% accurate.

1117 SQUARE FEET
(CEILING HEIGHT : 9'-0")



Inclusions:

Fridge, stove, dishwasher, built-in microwave with range hood, stacked washer and dryer.

LOCATION: Prime Annex! Bloor and Spadina. Walk to 2 subway lines, U of T, Queens Park, best of Bloor street restaurants and shops.

PARKING: 2 underground parking spots A-13, A-14

LOCKER: #23

MAINTNANCE: \$616.00/mth included water, building insurance, parking and common elements.



For Further information, please contact

Ophira Sutton

Sales Representative

Sutton Group-Associates Realty Inc., Brokerage

416-966-0300

ophirasutton@rogers.com

www.ophirasutton.com