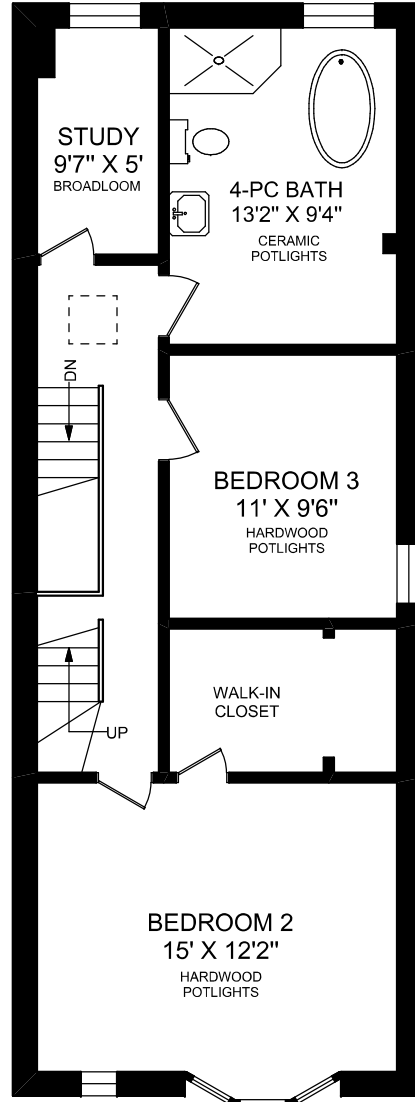
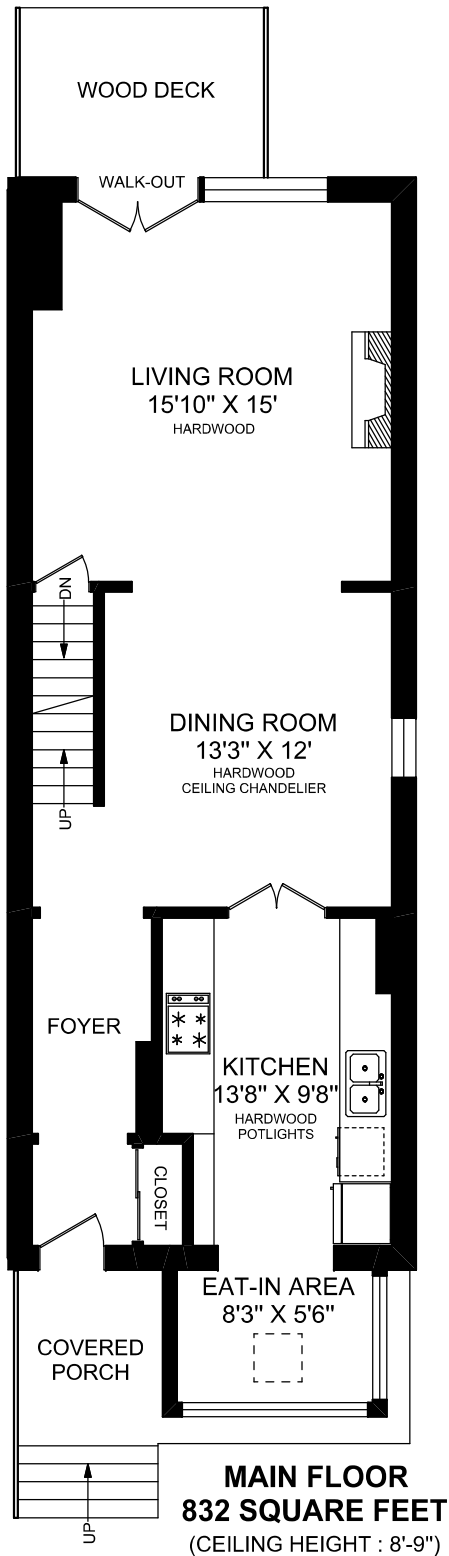
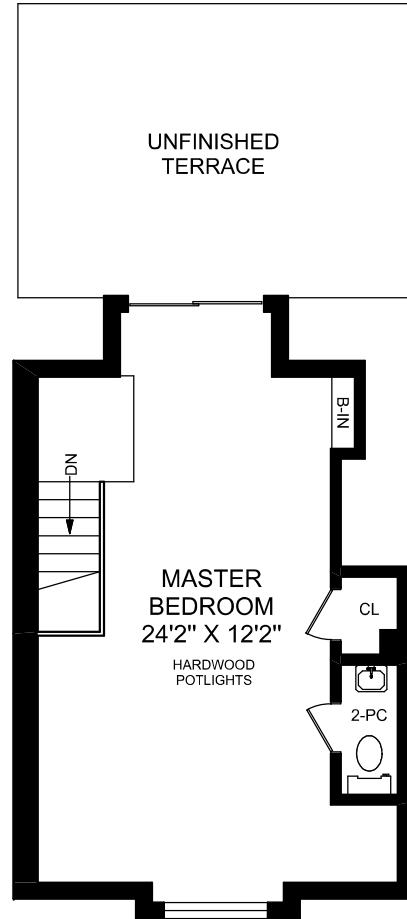


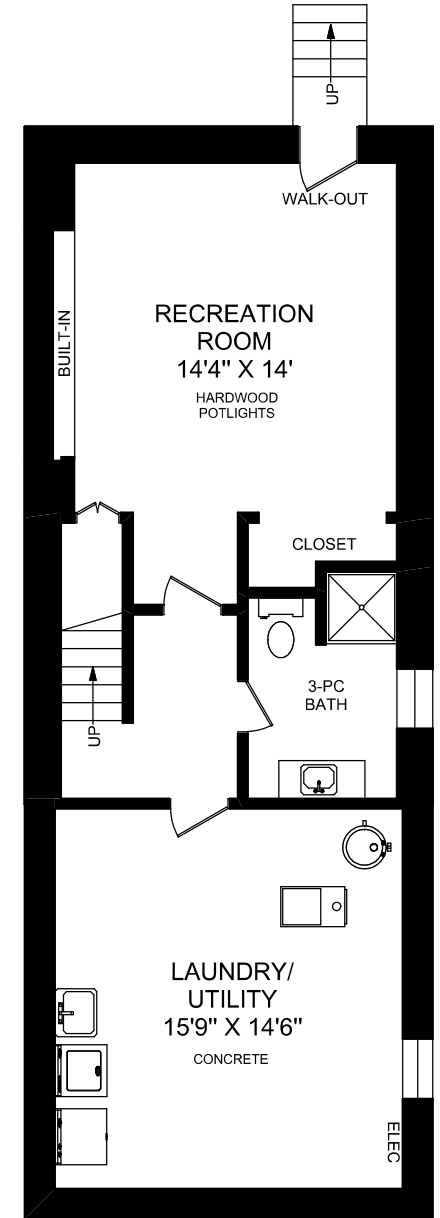
# 820 EUCLID AVENUE



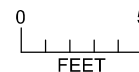
**SECOND FLOOR**  
**773 SQUARE FEET**  
(CEILING HEIGHT : 8'-2")



**THIRD FLOOR**  
**387 SQUARE FEET**  
(CEILING HEIGHT : 8'-0")



**LOWER LEVEL**  
**773 SQUARE FEET**  
(CEILING HEIGHT : 6'-9")



**TRUPLAN**  
416 573 2096  
E & O.E.

Floor plan may not be 100% accurate.