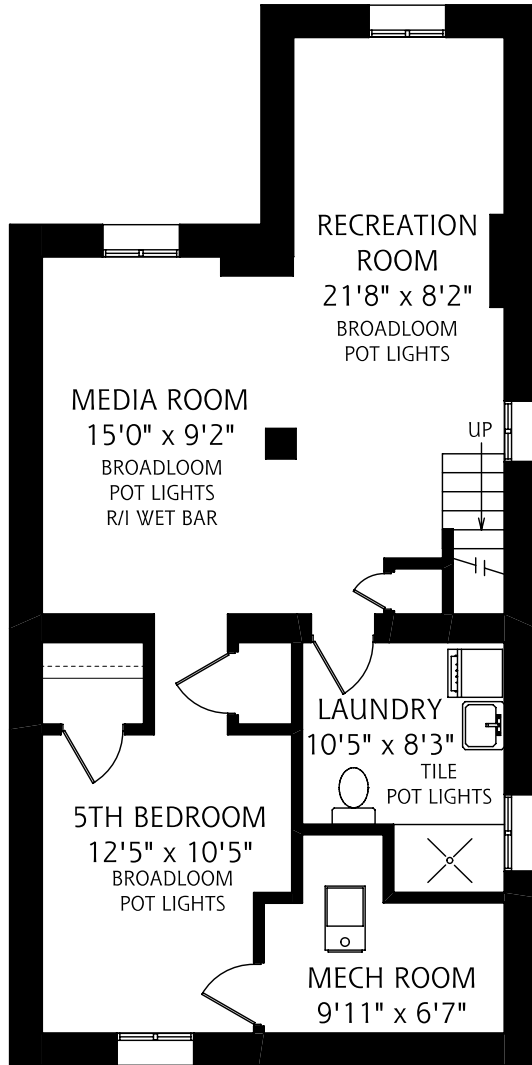


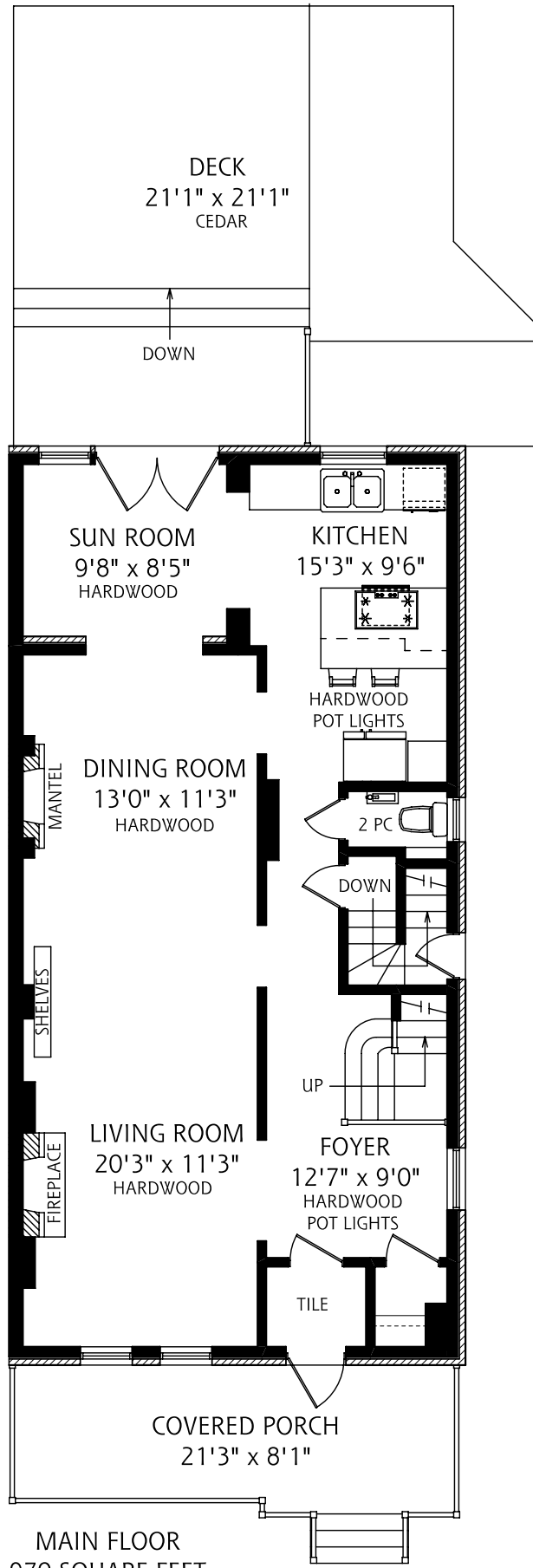
# 9 BARTON AVENUE



LOWER LEVEL  
875 SQUARE FEET



ALL MEASUREMENTS SHOULD BE CONSIDERED APPROXIMATE



MAIN FLOOR  
970 SQUARE FEET

**OPHIRA SUTTON**  
SALES REPRESENTATIVE



SUTTON GROUP - ASSOCIATES REALTY INC., BROKERAGE  
(416) 966 - 0300



**REAL FLOOR PLANS**

www.realfloorplans.com  
MAY 22, 2009 - COLIN THOMSON - 416-800-7526