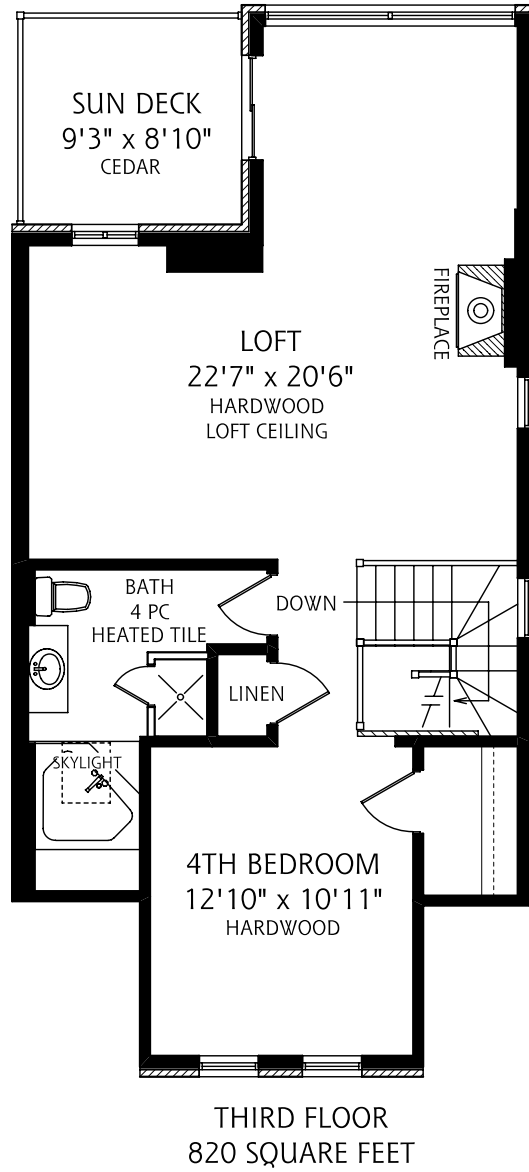
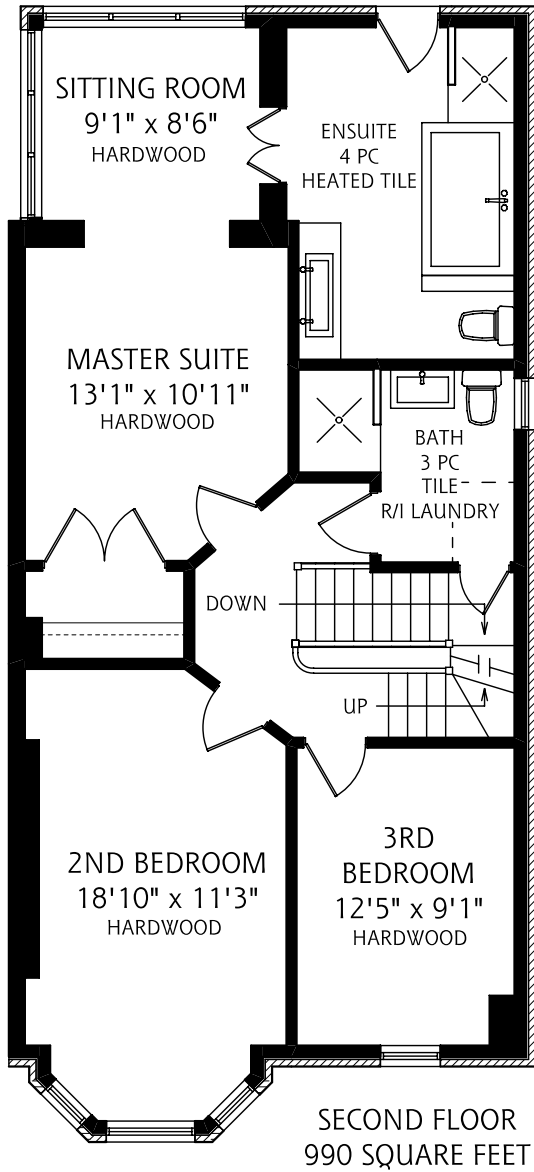


9 BARTON AVENUE



ALL MEASUREMENTS SHOULD BE CONSIDERED APPROXIMATE

OPHIRA SUTTON
SALES REPRESENTATIVE



SUTTON GROUP - ASSOCIATES REALTY INC., BROKERAGE
(416) 966 - 0300



REAL FLOOR PLANS
www.realfloorplans.com

MAY 22, 2009 - COLIN THOMSON - 416-800-7526